

Office of the Dean Organizational Chart

Dean
Jim White

UNDERGRADUATE
EDUCATION
Senior Associate
Dean
Abigail Panter

Curriculum and Instructional Innovation
IDEAs in Action
Undergraduate Curricula
Undergraduate Research
Instructional Innovation
Evaluation and Assessment
Honors and Distinguished Scholarships
Honors Carolina
Chancellor's Science Scholars
Distinguished Scholarships
Robertson Scholars
Leadership Program
Student Academic Support
Center for Student Success
Thrive Advising Hubs
The Writing Center
The Learning Center

FINE ARTS AND
HUMANITIES
Senior Associate
Dean
Elizabeth Engelhardt

Department and Curricula
American Studies
Art and Art History
Classics
Communication
Dramatic Art
English and Comparative Literature
Germanic and Slavic Languages and Literature
Linguistics
Music
Philosophy
Religious Studies
Romance Studies
Women's and Gender Studies
Institutes, Centers and Interdisciplinary Programs (10)
Carolina Center for Jewish Studies
Carolina Public Humanities
Center for the Study of the American South
Institute for the Arts and Humanities
Parr Center for Ethics
PlayMakers Repertory Co.
Program in Medieval and Early Modern Studies
Program in Philosophy, Politics and Economics
Program in Sexuality Studies
Program in Latino/a Studies

NATURAL SCIENCES
AND MATHEMATICS
Senior Associate
Dean
Jaye Cable

Department and Curricula
Applied Physical Sciences
Biology
Biomedical Engineering
Chemistry
Computer Science
Earth, Marine, and Environmental Sciences
Environment, Ecology, and Energy
Exercise and Sport Science
Mathematics
Physics and Astronomy
Psychology and Neuroscience
Statistics and Operations Research
Institutes, Centers and Interdisciplinary Programs (10)
Institute for Marine Sciences
Matthew Gfeller Center
Center for Research in Intercollegiate Athletics
Center for the Study of Retired Athletes
National Center for Catastrophic Sport Injury Research
CoSMSInstitute
Joint Applied Mathematics and Marine Sciences Fluid Lab
Triangle Universities Nuclear Laboratory (TUNL)
BeAMMakerspace Network
Data Science Minor Program

SOCIAL SCIENCES AND
GLOBAL PROGRAMS
Senior Associate Dean
Noreen McDonald

Department and Curricula
Aerospace Studies
African, African American and Diaspora Studies
Anthropology
Archeology
Asian and Middle Eastern Studies
City and Regional Planning
Contemporary European Studies
Economics
Geography
Global Studies
History
Latin American Studies
Military Science
Naval Science
Peace, War and Defense
Political Science
Sociology
Interdisciplinary Programs (11)
African Studies Center Carolina Asia Center
Center for European Studies
Center for Middle East and Islamic Studies
Center for Slavic, European and East European Studies
Institute for the Study of the Americas
Study Abroad
Southeast Regional Climate Center
Center for Urban and Regional Studies
Program in Entrepreneurship
Program for Public Discourse

RESEARCH AND
INNOVATION
Associate Dean
Kelly Giovanello

Research Cores

Director of Research Administration
Andrea Walens

DIVERSITY, EQUITY,
AND INCLUSION
Senior Associate
Dean
Karla Slocum

DEI Program Manager
Olivia Mohammed

OPERATIONS AND
STRATEGY
Senior Associate
Dean
Kate Henz

Finance and Budget Management
Human Resources Administration
Information Technology
Services and Data Analytics
Facilities Planning

See CAS Business Operations Organizational Chart

COMMUNICATIONS
Director
Geneva Collins

Associate Director
Kim Spurr

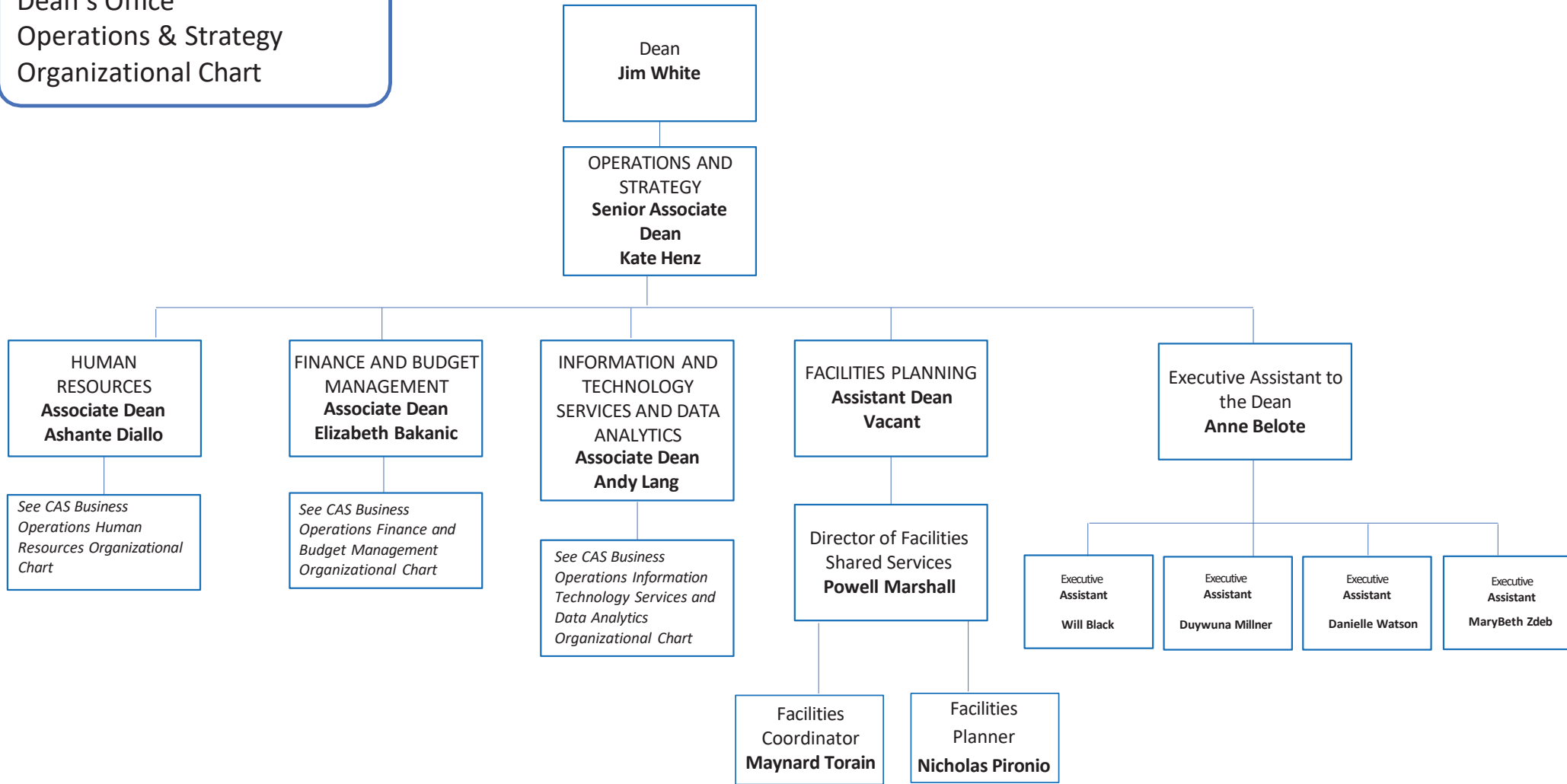
Public Communications Specialist
Jessica Abel

ARTS AND SCIENCES
FOUNDATION
Senior Associate Dean
and Executive Director
Anne Collins

See CAS Arts and Sciences Foundation Organizational Chart



Dean's Office
Operations & Strategy
Organizational Chart



Business Operations Human Resources Organizational Chart

OPERATIONS AND STRATEGY
Senior Associate
Dean
Kate Henz

Executive Assistant
Joy Montemorano

Associate Dean of Human Resources
Ashante Diallo

Admin Support Specialist
Jordan Pulliam

Business Training Manager
Coop Roberts-Cooper

Director of Faculty Administration
Vacant

Senior Director of HR Shared Services
Roseanda Hall

Faculty Specialist
Teresa Wilkinson

Faculty Specialist
Janet Farrell

HR Consultant
Stephanie Curry
Social Sciences and Global Programs

HR Consultant
Toby Hedgepeth
Biology, Chemistry, EXSS, Physics & Astro, Psych & Neuro

HR Consultant
Chris Genwright
Fine Arts and Humanities

HR Consultant
Adrienne Jeffries
Dean's Office, OASIS, Arts & Science Foundation

HR Consultant
Marquetta Reid
Natural Sciences and Mathematics, Undergraduate Education

HR Business Partner
Wendy Pender

HR Business Partner
John Whiteman

HR Business Partner
Aislinn Spain

HR Business Partner
Brittany Keesee

HR Business Partner
Benita Quick

HR Business Partner
Danielle Ford

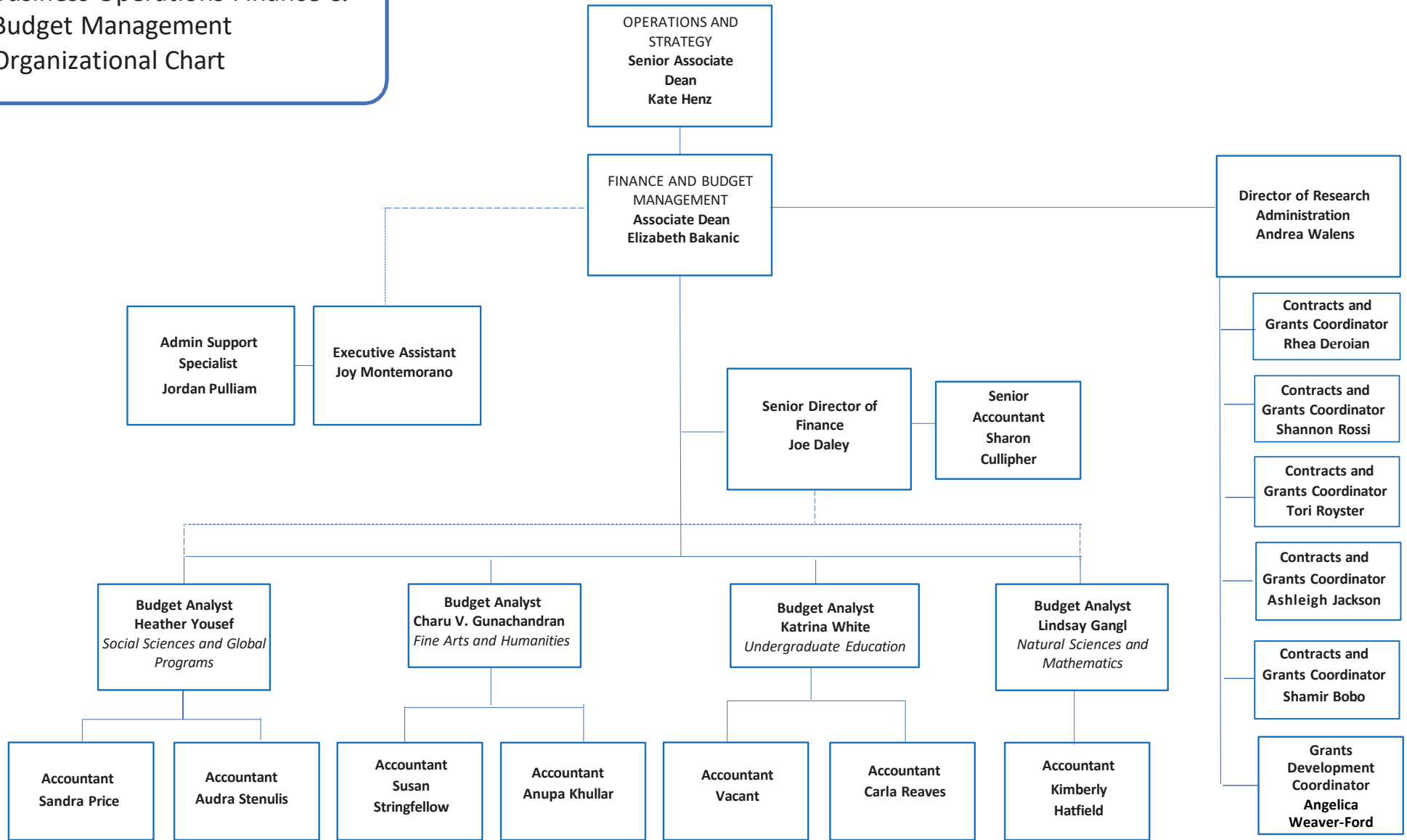
HR Business Partner
Kenesha Bigelow

HR Business Partner
Ingrid Rivera

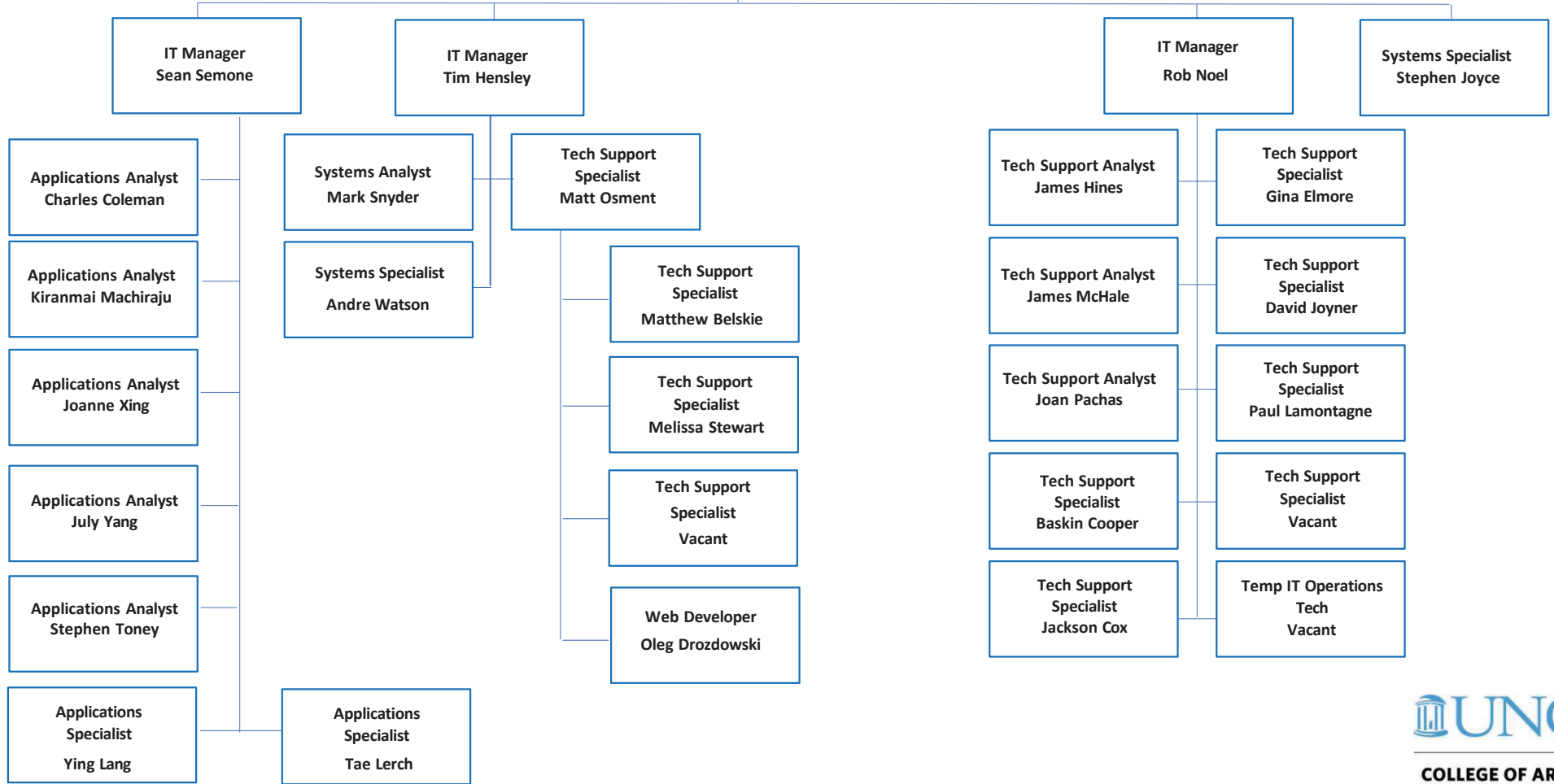
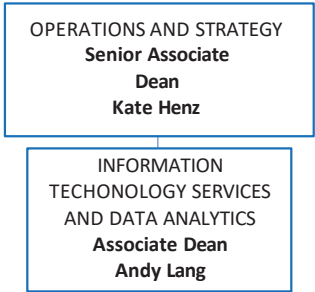
HR Business Partner
Pratibha Sirdeshmukh



**Business Operations Finance & Budget Management
Organizational Chart**



Office of Arts and Sciences
 Information Technology
 Services and Data Analytics
 Organizational Chart



Arts and Sciences Foundation

**Board of Directors
Arts and Sciences
Foundation**

**Jim White
Dean and President
of Foundation**

**Executive Director
Anne Collins**

**Associate Dean for
Finance and Budget
Management
Elizabeth Bakanic**

**Director of Donor
Relations and
Communications
Meredith Tunney**

**Director of
Development and
Prospect Management
Tina CoyneSmith**

**Associate Dean of
Development
Ronda Manuel**

**Executive Assistant
Genell Lyons**

**Accountant
Kristen Register**

**Director of Annual
Giving
Anna Thompson**

**Director of
Development
Cassie Diltz**

**Director of
Development
Andre Williams**

**Senior Director of
Development
Colleen Sisneros**

**Institute for the Arts and
Humanities
Director of Development
Angela O'Neill**

**Business Services
Coordinator
Ali Blue**

**Senior Associate
Director of Donor
Relations
Joanna Cardwell**

**Assistant Director of
Annual Giving
Jermani Horton**

**Associate Director of
Development
Isabelle Christensson**

**Associate Director of
Development
Michael Klaus**

**Associate Director of
Development
Kathryn Banas**

**Institute for the Arts and
Humanities
Development Coordinator
Mauri Connors**

**Administrative
Support Specialist
Katy Galbraith**

**Assistant Director of
Donor Relations
Erin Bland**

**Event Coordinator
and Business
Management
Abby Coleman**

**Associate Director of
Development
Anne Worthington**

**Associate Director of
Development
Chris Ford**

**Associate Director of
Development
Jennifer Chandler**

**Playmakers Repertory
Company
Director of Development
Kymberly Burkhead-Dalton**

**Administrative
Support Specialist
Allison Maldonado**

**Donor Relations
Specialist
Mary Moorefield**

**Donor Relations and
Communications
Specialist
Andy Berner**

**Development
Manager for Annual
Giving and
Engagement Institute
for Marine Sciences
Libby O'Malley**

**Associate Director of
Development
Josh Thornton**

**Playmakers Repertory
Company
Assistant Director of
Development
Vacant**

**Associate Director of
Development
Vacant**

