

# Office of the Dean Organizational Chart

Dean  
Jim White

UNDERGRADUATE  
EDUCATION  
Senior Associate  
Dean  
Abigail Panter

**Curriculum and Instructional Innovation**  
IDEAs in Action  
Undergraduate Curricula  
Undergraduate Research  
Instructional Innovation  
Evaluation and Assessment  
**Honors and Distinguished Scholarships**  
Honors Carolina  
Chancellor's Science Scholars  
Distinguished Scholarships  
Robertson Scholars  
Leadership Program  
**Student Academic Support**  
Center for Student Success  
Thrive Advising Hubs  
The Writing Center  
The Learning Center

FINE ARTS AND  
HUMANITIES  
Senior Associate  
Dean  
Elizabeth Engelhardt

**Department and Curricula**  
American Studies  
Art and Art History  
Classics  
Communication  
Dramatic Art  
English and Comparative Literature  
Germanic and Slavic Languages and Literature  
Linguistics  
Music  
Philosophy  
Religious Studies  
Romance Studies  
Women's and Gender Studies  
**Institutes, Centers and Interdisciplinary Programs (10)**  
Carolina Center for Jewish Studies  
Carolina Public Humanities  
Center for the Study of the American South  
Institute for the Arts and Humanities  
Parr Center for Ethics  
PlayMakers Repertory Co.  
Program in Medieval and Early Modern Studies  
Program in Philosophy, Politics and Economics  
Program in Sexuality Studies  
Program in Latino/a Studies

NATURAL SCIENCES  
AND MATHEMATICS  
Senior Associate  
Dean  
Jaye Cable

**Department and Curricula**  
Applied Physical Sciences  
Biology  
Biomedical Engineering  
Chemistry  
Computer Science  
Earth, Marine, and Environmental Sciences  
Environment, Ecology, and Energy  
Exercise and Sport Science  
Mathematics  
Physics and Astronomy  
Psychology and Neuroscience  
Statistics and Operations Research  
**Institutes, Centers and Interdisciplinary Programs (10)**  
Institute for Marine Sciences  
Matthew Gfeller Center  
Center for Research in Intercollegiate Athletics  
Center for the Study of Retired Athletes  
National Center for Catastrophic Sport Injury Research  
CoSMSInstitute  
Joint Applied Mathematics and Marine Sciences Fluid Lab  
Triangle Universities Nuclear Laboratory (TUNL)  
BeAMMakerspace Network  
Data Science Minor Program

SOCIAL SCIENCES AND  
GLOBAL PROGRAMS  
Senior Associate Dean  
Noreen McDonald

**Department and Curricula**  
Aerospace Studies  
African, African American and Diaspora Studies  
Anthropology  
Archeology  
Asian and Middle Eastern Studies  
City and Regional Planning  
Contemporary European Studies  
Economics  
Geography  
Global Studies  
History  
Latin American Studies  
Military Science  
Naval Science  
Peace, War and Defense  
Political Science  
Sociology  
**Interdisciplinary Programs (11)**  
African Studies Center Carolina  
Asia Center  
Center for European Studies  
Center for Middle East and Islamic Studies  
Center for Slavic, European and East European Studies  
Institute for the Study of the Americas  
Study Abroad  
Southeast Regional Climate Center  
Center for Urban and Regional Studies  
Program in Entrepreneurship  
Program for Public Discourse

RESEARCH AND  
INNOVATION  
Associate Dean  
Kelly Giovanello

Research Cores

DIVERSITY, EQUITY,  
AND INCLUSION  
Senior Associate  
Dean  
Karla Slocum

DEI Program  
Manager  
Olivia Mohammed

OPERATIONS AND  
STRATEGY  
Senior Associate  
Dean  
Kate Henz

Finance and Budget  
Management  
Human Resources  
Administration  
Information  
Technology  
Services and Data  
Analytics  
Facilities Planning

*See CAS Business  
Operations  
Organizational  
Chart*

COMMUNICATIONS  
Director  
Geneva Collins

Associate Director  
Kim Spurr

Public  
Communications  
Specialist  
Jessica Abel

ARTS AND SCIENCES  
FOUNDATION  
Senior Associate Dean  
and Executive Director  
Anne Collins

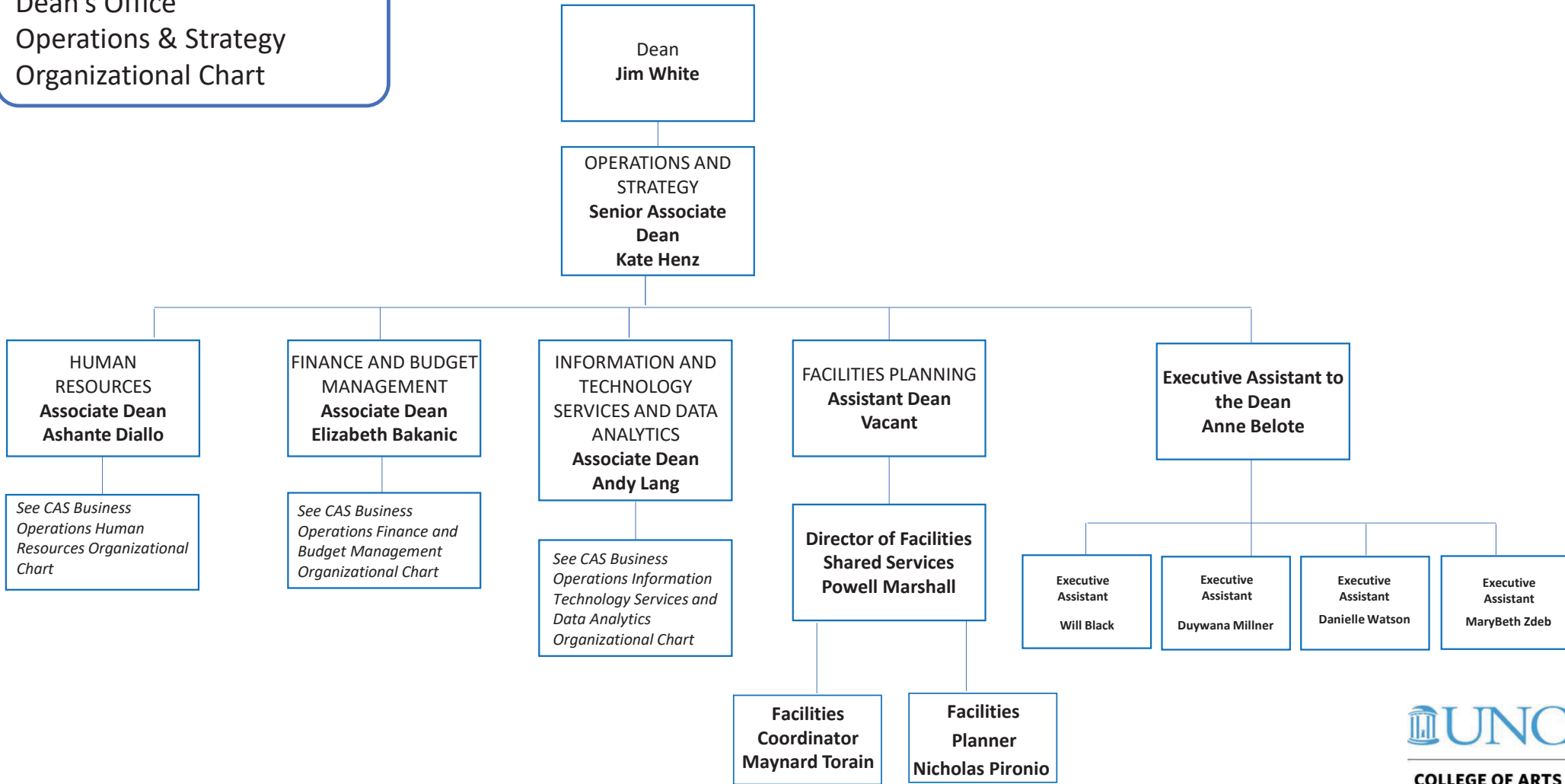
*See CAS Arts and  
Sciences Foundation  
Organizational Chart*



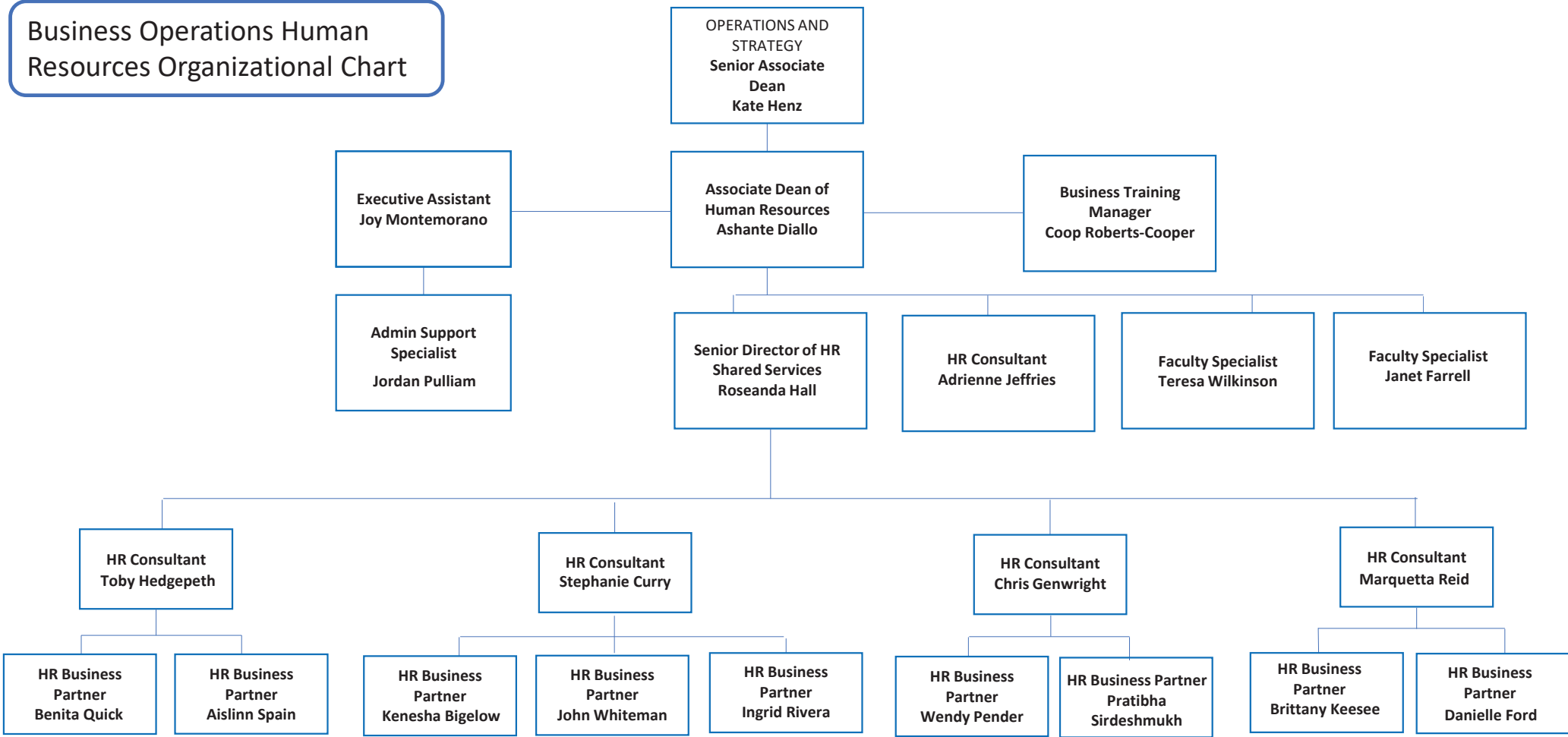
**COLLEGE OF ARTS  
AND SCIENCES**

Rev. 11.8.2023

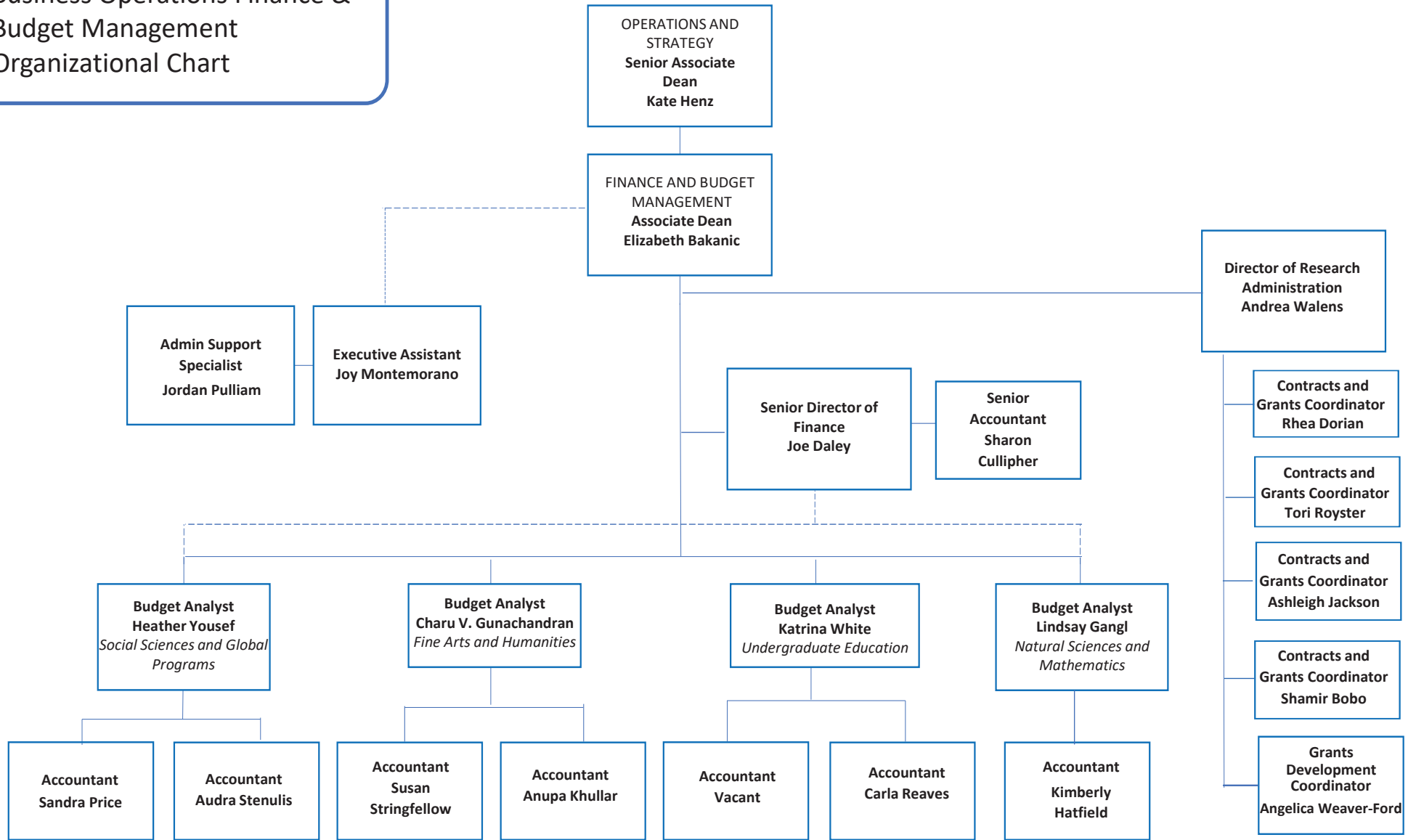
**Dean's Office  
Operations & Strategy  
Organizational Chart**



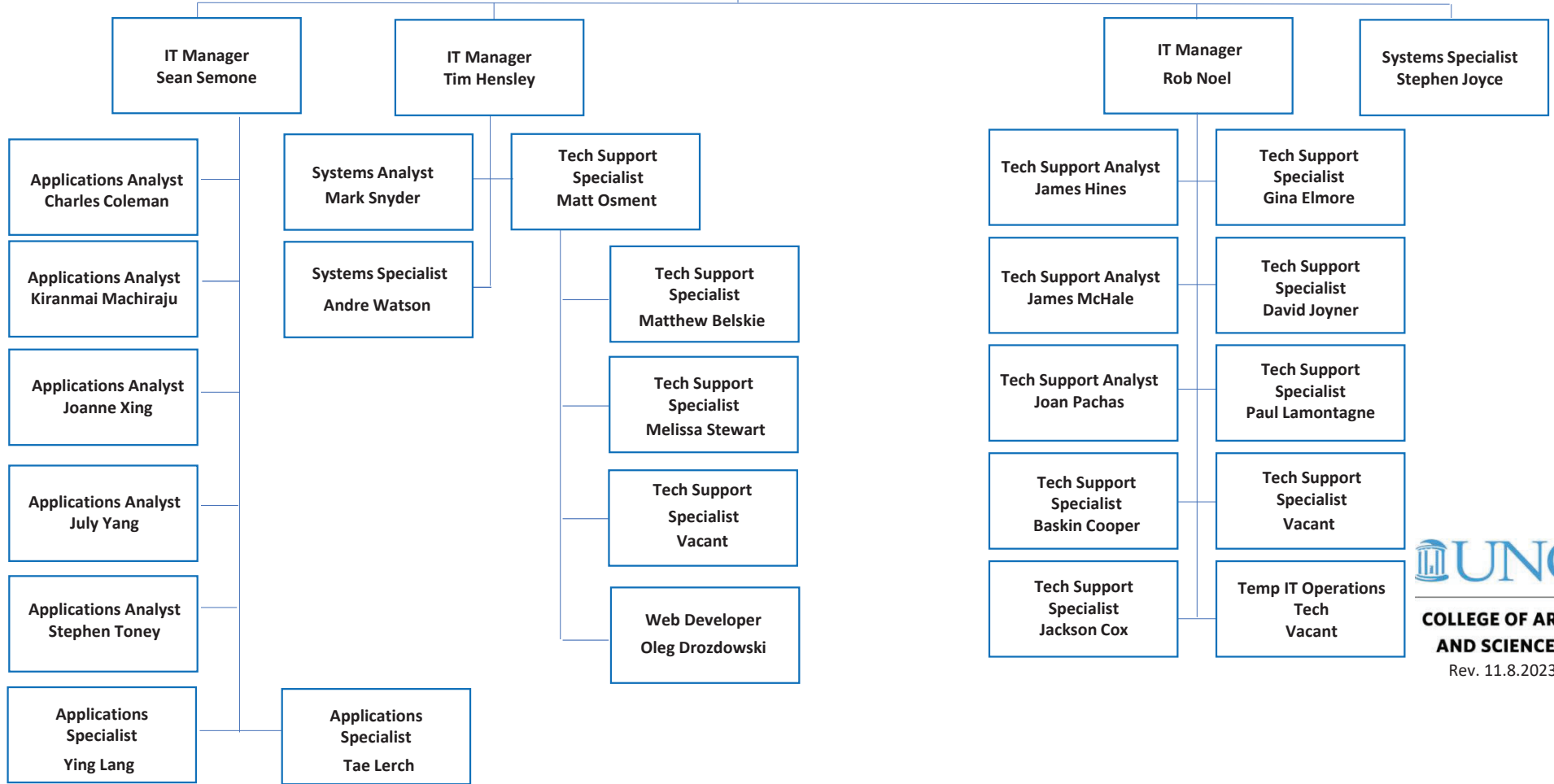
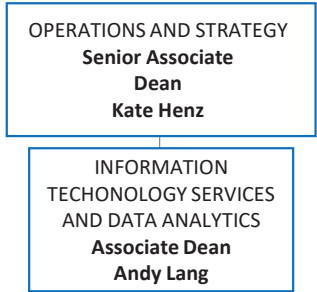
# Business Operations Human Resources Organizational Chart



**Business Operations Finance &  
Budget Management  
Organizational Chart**



Office of Arts and Sciences  
 Information Technology  
 Services and Data Analytics  
 Organizational Chart



# Arts and Sciences Foundation

**Board of Directors**  
Arts and Sciences  
Foundation

**Jim White**  
Dean and President  
of Foundation

**Executive Director**  
Anne Collins

**Associate Dean for  
Finance and Budget  
Management**  
Elizabeth Bakanic

**Director of Donor  
Relations and  
Communications**  
Meredith Tunney

**Director of  
Development and  
Prospect Management**  
Tina CoyneSmith

**Associate Dean of  
Development**  
Ronda Manuel

**Executive Assistant**  
Genell Lyons

**Accountant**  
Kristen Register

**Director of Annual  
Giving**  
Anna Thompson

**Director of  
Development**  
Cassie Diltz

**Director of  
Development**  
Andre Williams

**Senior Director of  
Development**  
Colleen Sisneros

**Institute for the Arts and  
Humanities**  
**Director of Development**  
Angela O'Neill

**Business Services  
Coordinator**  
Ali Blue

**Senior Associate  
Director of Donor  
Relations**  
Joanna Cardwell

**Assistant Director of  
Annual Giving**  
Jermani Horton

**Associate Director of  
Development**  
Isabelle Christensson

**Associate Director of  
Development**  
Michael Klaus

**Associate Director of  
Development**  
Kathryn Banas

**Institute for the Arts and  
Humanities**  
**Development Coordinator**  
Mauri Connors

**Administrative  
Support Specialist**  
Katy Galbraith

**Assistant Director of  
Donor Relations**  
Erin Bland

**Event Coordinator  
and Business  
Management**  
Abby Coleman

**Associate Director of  
Development**  
Anne Worthington

**Associate Director of  
Development**  
Chris Ford

**Associate Director of  
Development**  
Jennifer Chandler

**Playmakers Repertory  
Company**  
**Director of Development**  
Kymberly Burkhead-Dalton

**Administrative  
Support Specialist**  
Allison Maldonado

**Donor Relations  
Specialist**  
Mary Moorefield

**Donor Relations and  
Communications  
Specialist**  
Andy Berner

**Development  
Manager for Annual  
Giving and  
Engagement Institute  
for Marine Sciences**  
Libby O'Malley

**Associate Director of  
Development**  
Chris Ford

**Associate Director of  
Development**  
Josh Thornton

**Playmakers Repertory  
Company**  
**Assistant Director of  
Development**  
Vacant

**Associate Director of  
Development**  
Vacant



**COLLEGE OF ARTS  
AND SCIENCES**

Rev. 11.8.2023