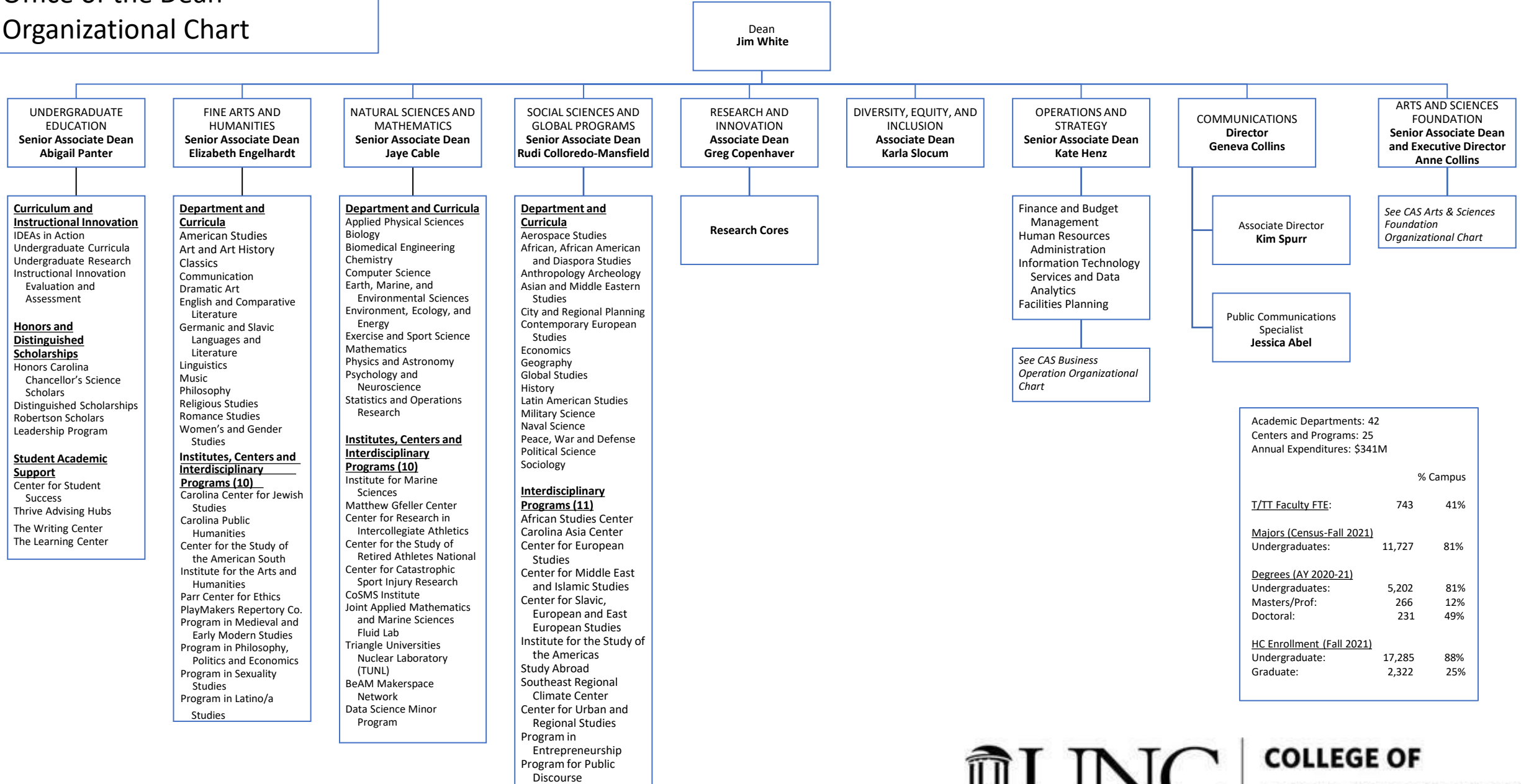
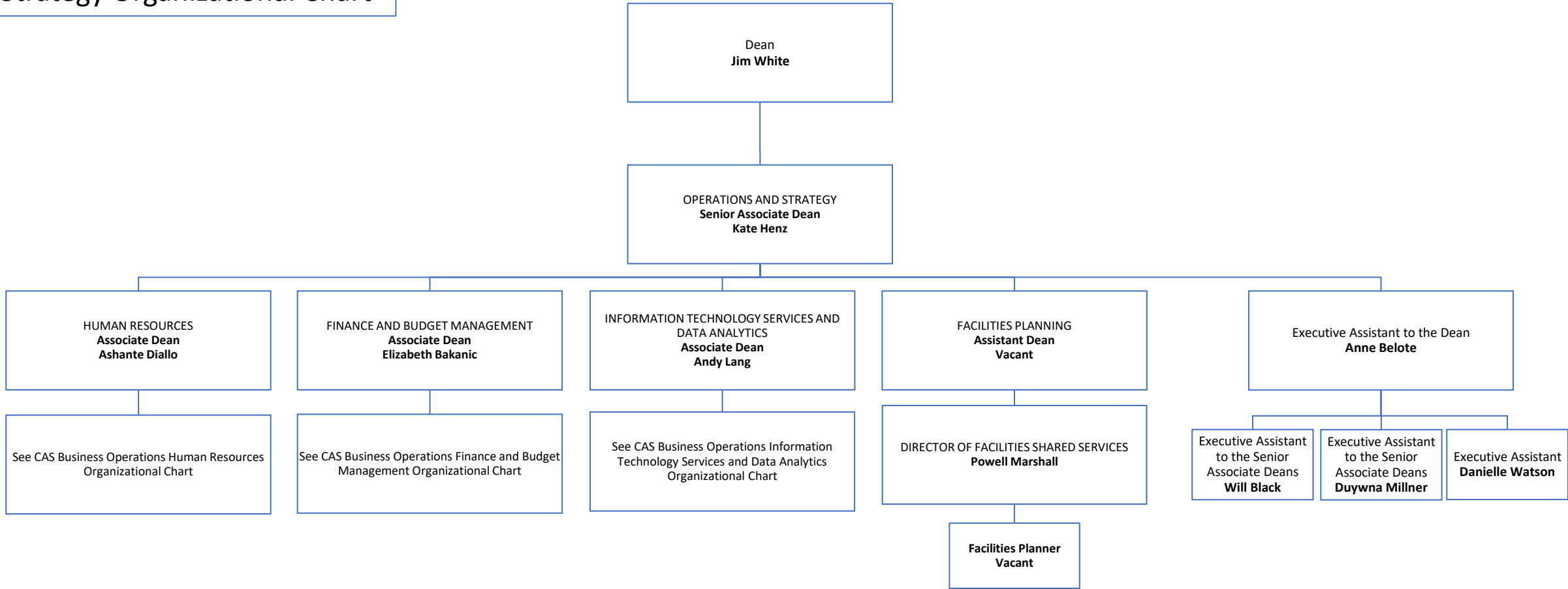


Office of the Dean Organizational Chart

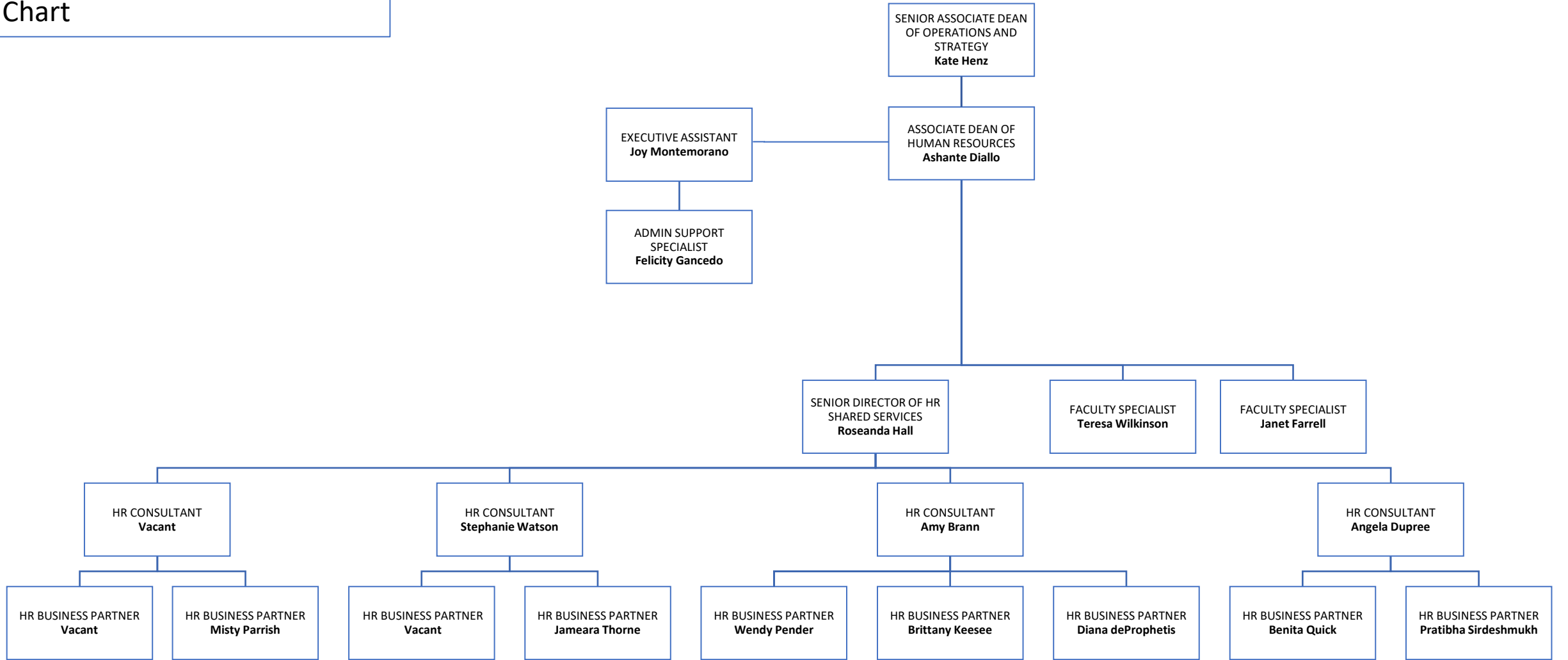


Academic Departments: 42		
Centers and Programs: 25		
Annual Expenditures: \$341M		
		% Campus
T/TT Faculty FTE:	743	41%
Majors (Census-Fall 2021)		
Undergraduates:	11,727	81%
Degrees (AY 2020-21)		
Undergraduates:	5,202	81%
Masters/Prof:	266	12%
Doctoral:	231	49%
HC Enrollment (Fall 2021)		
Undergraduate:	17,285	88%
Graduate:	2,322	25%

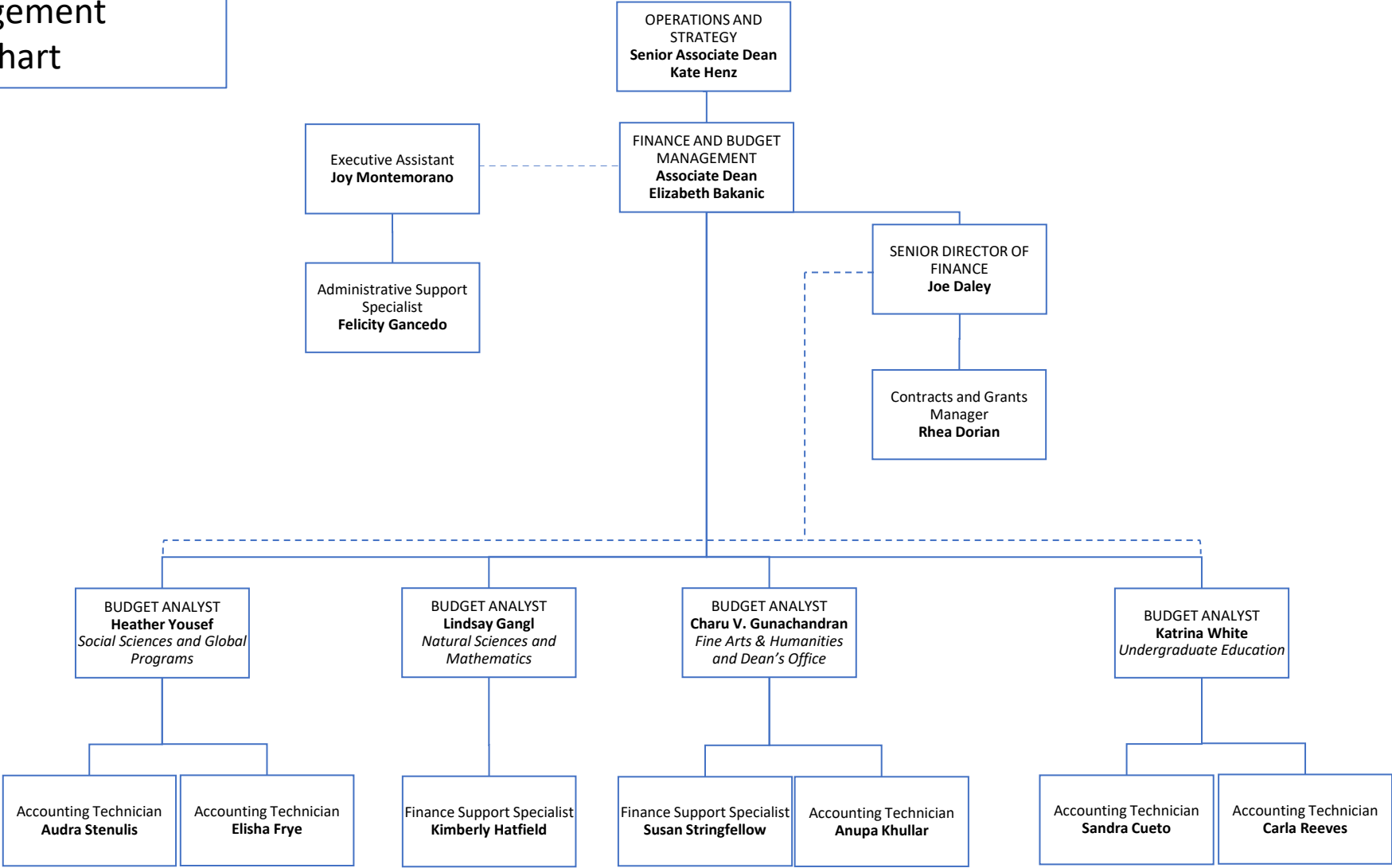
Dean's Office Operations & Strategy Organizational Chart



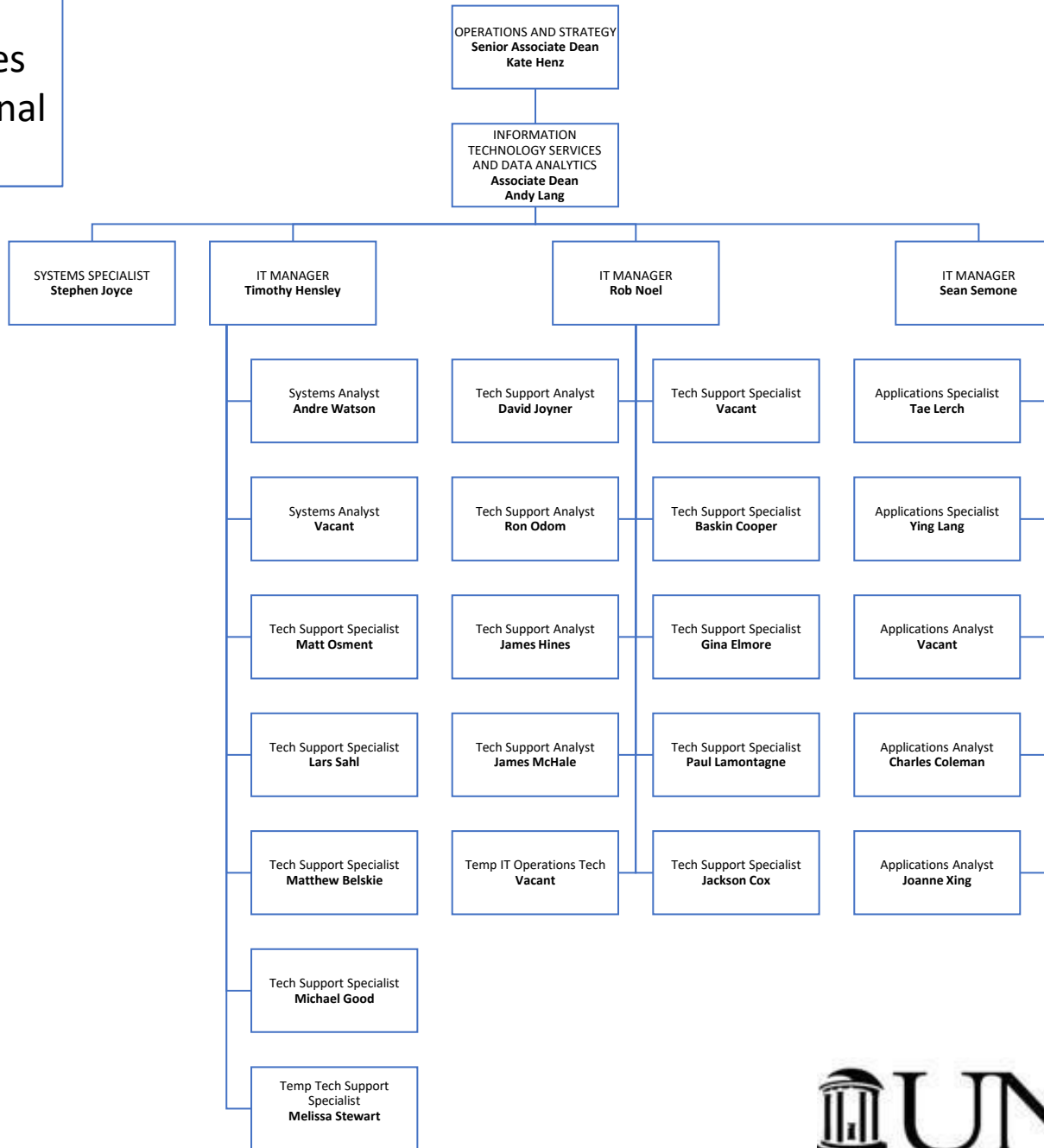
Business Operations Human Resources Organizational Chart



**Business Operations Finance
& Budget Management
Organizational Chart**



Office of Arts and Sciences
 Information Technology Services
 and Data Analytics Organizational
 Chart



Arts and Sciences Foundation

